



DUSTLESS® HEPA PACK VACUUM OWNERS MANUAL

CONGRATULATIONS: You are now the owner of a Dustless™ HEPA Pack Vacuum which incorporates the latest advancements in wet/dry dust removal technology. This vacuum is engineered to eliminate the dust that has been a problem for so many years with wet/dry vacuums almost from their inception. This vacuum is different from anything in its category.

Once again **CONGRATULATIONS**

This cleaner was inspected and packaged carefully before being shipped from the factory.

If you should happen to need assistance during assembly or operation, call 1-800-568-3949 for our customer service department.

Serial Number _____

Model Number _____

Model and serial numbers are found on the side of the motor cover. You should record both model and serial numbers in a safe place for future use.

Dustless®
TECHNOLOGIES

800.568.3949
1285 East 650 South
Price, Utah 84501
dustlesstechnologies.com

FULL ONE-YEAR WARRANTY ON DUSTLESS™ WET/DRY VACUUMS

If within one year from the date of purchase, this Dustless™ HEPA Pack Vacuum fails due to a defect in material or workmanship, Dustless Technologies will repair or replace it, free of charge. Please note that this warranty is limited to and applies only to the original purchaser "For Household Use Only," "POUR USAGE ME' NAGER TYPE MENAGER", so long as that use is in accordance with instructions and limitations set out in this manual.

If this Dustless™ HEPA Pack Vacuum is used for commercial or rental purposes, this warranty coverage applies for 90 days from date of purchase.

Warranty registration - Please fill out and return the warranty registration card accompanying your cleaner. Proof of purchase date will be needed for warranty work.

Obtaining Warranty Service - Warranty Service is available by simply contacting the factory at 1-800-568-3949.

This warranty gives you specific legal rights, and you may also have other rights which vary from state to state. There are no warranties, express or implied, written or verbal, which extend beyond the description in this manual.

HEPA Pack is a commercial and household dry pick up vacuum cleaner

Super 120-1200/AI-10Q

Read the owner's manual carefully before using

IMPORTANT SAFETY INSTRUCTIONS
IMPORTANTES MESURES DE SECURITE
IMPORTANTE PARA SU SEGURIDAD

SAVE THESE INSTRUCTIONS
CONSERVER CES INSTRUCTIONS
GUARDAR ESTA INSTRUCCIONES

- Read the Owner's Manual completely before attempting to operate this unit.
- Always check the filters before each use.
- Connect to a properly grounded outlet. See grounding instructions.
- Don't change filters, clean the unit, or empty the canister until the plug has been disconnected from the electrical outlet. Always unplug unit when not in use and before servicing.

WARNING – To avoid risk of electrical shock, do not use out doors or on wet surfaces.

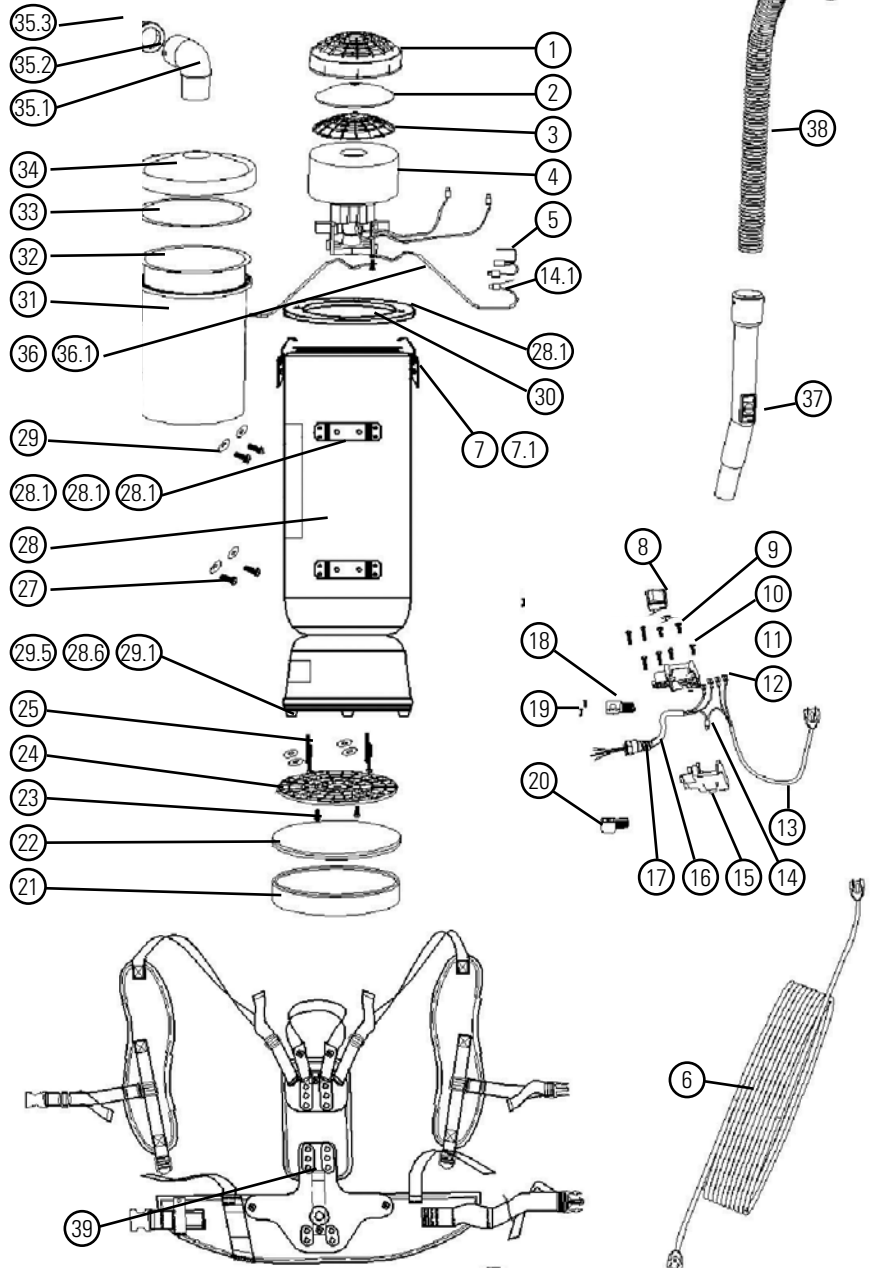
Avertissement – Pour reduire les risques de choc electrique, ne pas utiliser a l'exterieur et ne pas aspirer de matieres humides.

Advertencia – Para reducir el riesgo de un electrochoque, no usarlo afuerra o mojado.

WARNING – To reduce the risk of burns, fire, electric shock, or personal injury:

- Do not leave appliance unattended when plugged in. Unplug from outlet when not in use and before servicing.
- Do not use outdoors or on wet surfaces.
- Do not try to recover any liquid with this vacuum. This vacuum is for DRY RECOVERY only.
- Do not allow to be used as a toy. Close attention is necessary when used by or near children.
- Use only as described in this manual. Use only manufacturer's recommended attachments.
- Do not use with damaged cord or plug. If appliance is not working as it should, has been dropped, damaged, left outdoors or dropped into water, return it to a service center.
- Do not pull or carry by cord, use cord as a handle, close a door on cord, or pull cord around sharp edges or corners. Do not run appliance over cord. Keep cord away from heated surfaces.
- Do not unplug by pulling on cord. To unplug, grasp the plug, not the cord.
- Do not handle plug or appliance with wet hands.
- Do not put any object into openings. Do not use with any blocked opening. Keep free of dust, lint, hair, or any thing that may reduce air flow.
- Keep hair, loose clothing, fingers and all parts of body away from openings and moving parts.
- Turn off all controls before unplugging.
- Use extra care when cleaning on stairs.
- Do not use to pick up flammable or combustible liquids, such as gasoline or use in areas where they may be present.
- Connect to a properly grounded outlet only. See grounding instructions.
- Do not pick up any objects that are burning or smoking, such as cigarettes, matches or hot ashes.
- Do not use without a dust bag and / or filters in place.
- Do not operate with wet hands.

PARTS LIST

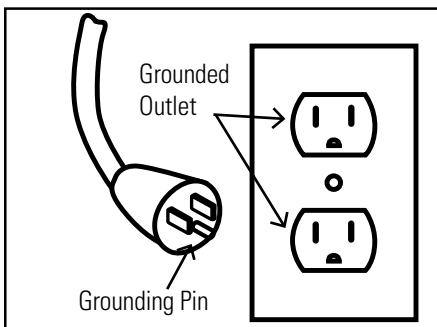


Key	Qty	Description	Key	Qty	Description
1	1	Filter assembly	25	15	Screws (M5*15)
2	1	Filter assembly	27	15	Screws (M5/16*15)
3	1	Filter assembly	28	1	10Q canister body
4	1	Motor	28.1	1	Grounding wire
5	1	Thermo-protector	28.2	1	Harness hanger 1
6	1	Extension cord	28.3	1	Aluminum rivit (4.2*12)
7	1	Cover latch	28.4	1	Washer
7.1		Screws	28.5	1	20 foot gasket
8	1	Switch	28.6	10	Screw (M5*10)
9	25	Screws (M3*25)	28.7	1	Fastening nut M5
10	15	Screws (M3*15)	29	1	Big washer
11	1	Upper part of switch box	30	1	Motor depression ring
12	1	Connector terminal & insulator	31	1	10Q cloth dust bag
13	1	Power supply cords & cord sets	32	1	10Q dust bag
14	1	Wire connector & soldering log	33	1	Cover seal ring
14.1	1	Wire connector soldering log	34	1	Cover
15	1	Lower part of switch box	35.1	1	Hose inlet tube
16	1	Connection cord	35.2	1	Screw for hose
17	1	Cord protector assembly	35.3	1	Screw cuff
18	1	Cord protector assembly	36	2	Grounding wire
19	12	Screws (M3.5*12)	36.1	5	Wire connector
20	1	Cord protector assembly	37	1	Handle
21	1	Round rubber support	38	1	Hose
22	1	Sound muffler (foam filter)	39	1	Harness
23	10	Screws (M5*10)	40	1	Rating label
24	1	Plastic air diffuser	41	1	Warning Label

Installation and Operating Instructions

GROUNDING INSTRUCTIONS:

This appliance must be grounded. If it should malfunction or breakdown, grounding provides a path of least resistance for electric current to reduce the risk of electric shock. This appliance is equipped with a cord having an equipment - grounding conductor and grounding plug. The plug must be inserted into an appropriate outlet that is properly installed and grounded in accordance with all local codes and ordinances.



DANGER - Improper connection of the conductor can result in a risk of electric shock. Check with a qualified electrician or service person if you are in doubt as to whether the outlet is properly grounded. Do not modify the plug provided with the appliance.

NOTE: Static shocks are common in dry areas or when the relative humidity of the air is low. This is only temporary and does not affect the use of the Vacuum.

MOTOR

Vacuum motors must never be used in application in which wet or moist conditions are involved, where dry chemicals or other volatile materials are present, or where airflow may be restricted or blocked. Such motors are designed to permit the vacuumed air to pass over the electrical wiring to cool it. Therefore, any liquid (including water), dry chemical or other foreign substance which could come in contact with electrical conductors could cause combustion (depending on volatility) or electrical shock. Failure to observe these precautions could result in

property damage and severe personal injury, including death in extreme cases.

THERMO-PROTECTOR INSTRUCTIONS

This appliance is equipped with a thermo-protector, which will cut off the circuit automatically to prevent the motor from overheating. Sufficiently plugging the airway for an extended period will result in the vacuum shutting off. If this occurs, press the switch to turn the vacuum to its "OFF" position and wait about 5 minutes for the motor to cool to a safe operating temperature. Be sure to determine the cause of overheating and rectify the problem before using the vacuum cleaner again, or it will continue to overheat and shut off. In some instance the circuit is cut off because of high motor temperature caused by dust bag clog or airway block. Please unplug the vacuum and check the inner dust bag and airway. If the dust bag is too dirty and clogged, replace with a new one. If airway is blocked, please get rid of the blockage before reuse. The motor can be restarted when it is cool.

ELECTRICAL

Excluding 220V motors, vacuum motors operate on a standard 120 volt, 60Hz, AC circuit. Severe changes in voltage, high or low, can cause damage to the motor and cause premature motor failure.

EXTENSION CORD

To prevent electrical damage, use the recommended 16 gauge extension cord provided. If you need to use a 100 foot cord, it must be 14 gauge or better. Do not use cords longer than 100 feet.

PREPARATION FOR OPERATION

1. Remove the cover (No. 34) and cover seal ring (No. 33), pull out the cloth dust bag (No. 31). Check to see that the filter guards (No. 1, No. 2 and No. 3) have not shifted during shipping (Figure A).
2. Install an inner dust bag (No. 32) inside of the outer cloth dust bag (No. 31). At the beginning of each shift, the bags

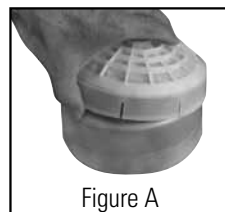


Figure A

should be checked. Empty or replace as necessary. **Note:** Never use a dust bag without the cloth dust bag.

3. This unit had 2 filter options. The open top filter can be emptied and reused. The closed top filter is designed to be filled and disposed of. There fore if there are any harmful contaminants in the filter bag, they wont escape the filter bag. The vacuum is equipped with a filter agitator rod. The knob, which can be seen from on top, can be pulled up and shaken from side to side when the vacuum is turned off to knock the debris off the filter and back to the bottom of the filter bag, increasing your suction once more.

4. Place the cover seal ring (No. 33) on the dust bags' opening (No. 32). (Figure B)
5. Replace the cover (No. 34) and clip the sunken edge of the cover tight by pushing downward the cover clip (No. 7).



Figure B

6. Push the bent connector tube (No. 35) into the cover (No. 34), make sure that it inserts into the cover (No. 34) completely and tightly (Figure C).



Figure C

7. Check the hose ends to make sure that they are tightly fixed.
8. Check the wear on the cord by the vacuum body ad at the plug. Pass the power supply cord (No. 13) through the strip outside the left side of the waist belt. (Figure E).
9. Fix the switch box (No. 11 and No. 15) under the sewn strap and knot the other strap around the switch box. (Figure F & Figure G).



Figure F

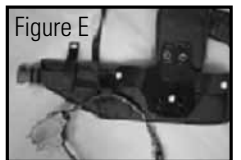


Figure E



Figure G

- Loosen the waist belt latch and chest belt latch. In an open area, lift the vacuum by one shoulder strap and slide your free arm into the other strap. (Figure D)



- Adjust the shoulder straps to allow the waist belt to be buckled around your waist.

- Fasten the waist belt and chest belt snugly and make sure the weight is resting comfortably on your hips. **NOTE:** The back-plate is adjustable up or down by removing the four screws (No. 27) that attach to the vacuum's body. (Figure H)



Figure H

- Attach tools to the handle and make sure the two ends are tightly connected.

Proper Vacuuming Motion for Large Area with Direct Suction Tools

- Begin with the wand parallel to your body.
- Draw the top of the wand in towards your waist and twist at the waist walking back and forward (a side-to-side motion).
- The motion is similar to mopping and keeps the upper body and arms from tiring.

MAINTENANCE INSTRUCTION

WARNING - The following information is for use by qualified service personnel only and is to provide guidance for troubleshooting and maintenance.

- UNPLUG the vacuum when working on the motor or any electrical part.
- CHECK the condition of all electrical cords before each use.
- DO NOT lubricate the motor; it is equipped with sealed bearings.

- The appliance has NO user serviceable parts.

PROPER STORAGE

When the vacuum is not in use, it should be stored in a dry place.

ELECTRICAL CORD CARE

NEVER stretch the cord tightly between the vacuum and the outlet. A cord that is stretched or pulled will not function properly and creates a danger. After vacuuming, unplug the cord and wind it up loosely. DO NOT wind the cord up by wrapping it around our hand and elbow.

CARING FOR YOUR VACUUM

- Every time you finish vacuuming, shake out the cloth and dust bags (No. 31 and No. 32).
- Each week, rinse, dry and return the foam (No. 21) at the bottom of the appliance below the motor.
- After each shift, wipe the inside and outside of the vacuum with a household cleaning agent.

FILTER MAINTENANCE

- Check the dust bag (No. 32) each time you start and finish vacuuming. A clogged and dirty dust bag restricts airflow and results in reduced suction and overheating.
- While vacuuming throughout a building, stop every two hours or as needed to shake out the dust bag (No. 32). Replace the dust bag when necessary. (Figure J). **NOTE:** Lift both dust bag and cloth bag out at the same time to avoid ripping the dust bag, especially when it is full.

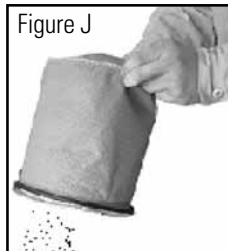


Figure J

- Once a month (or more often if necessary) hand or machine wash the cloth dust bag (No. 31) and let it LINE DRY. (Do not put it in the dryer)

- Once a month (or more often necessary) clean the filter (No. 2) between the motor guards, located inside the vacuum under the paper and cloth dust bag. (Figure K)

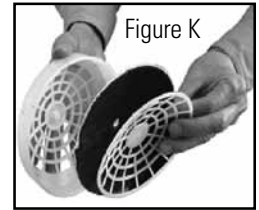


Figure K

- Pull the top piece of the motor guard (No. 1) off and remove the foam media (No. 2). Shake it out, rinse it and let it air dry thoroughly.
 - Before the next use, return the foam media (No. 2) to its place. Replace with new foam media if necessary.
 - Firmly snap the top piece of the motor guard (No. 1) into place.
- Each week rinse, air dry, and return the foam filter (No. 22) at the bottom of the appliance below the motor.
 - Pull out the round rubber support (No. 21) and take foam filter (No. 22) out, rinse it and let it air dry thoroughly.
 - Before the next use, return the foam filter (No. 22) to its place.
 - Put the round rubber support (No. 22) into the canister to support the foam filter from falling down.

Dustless[®]
TECHNOLOGIES

1285 East 650 South, Price, Utah 84501
p 435.637.5885 f 435.637.5895
www.dustlesstools.com